

# LOT 44 THE POINT CIRCUIT GALLERY

THE ART OF LIVING



ARTISTS IMPRESSION



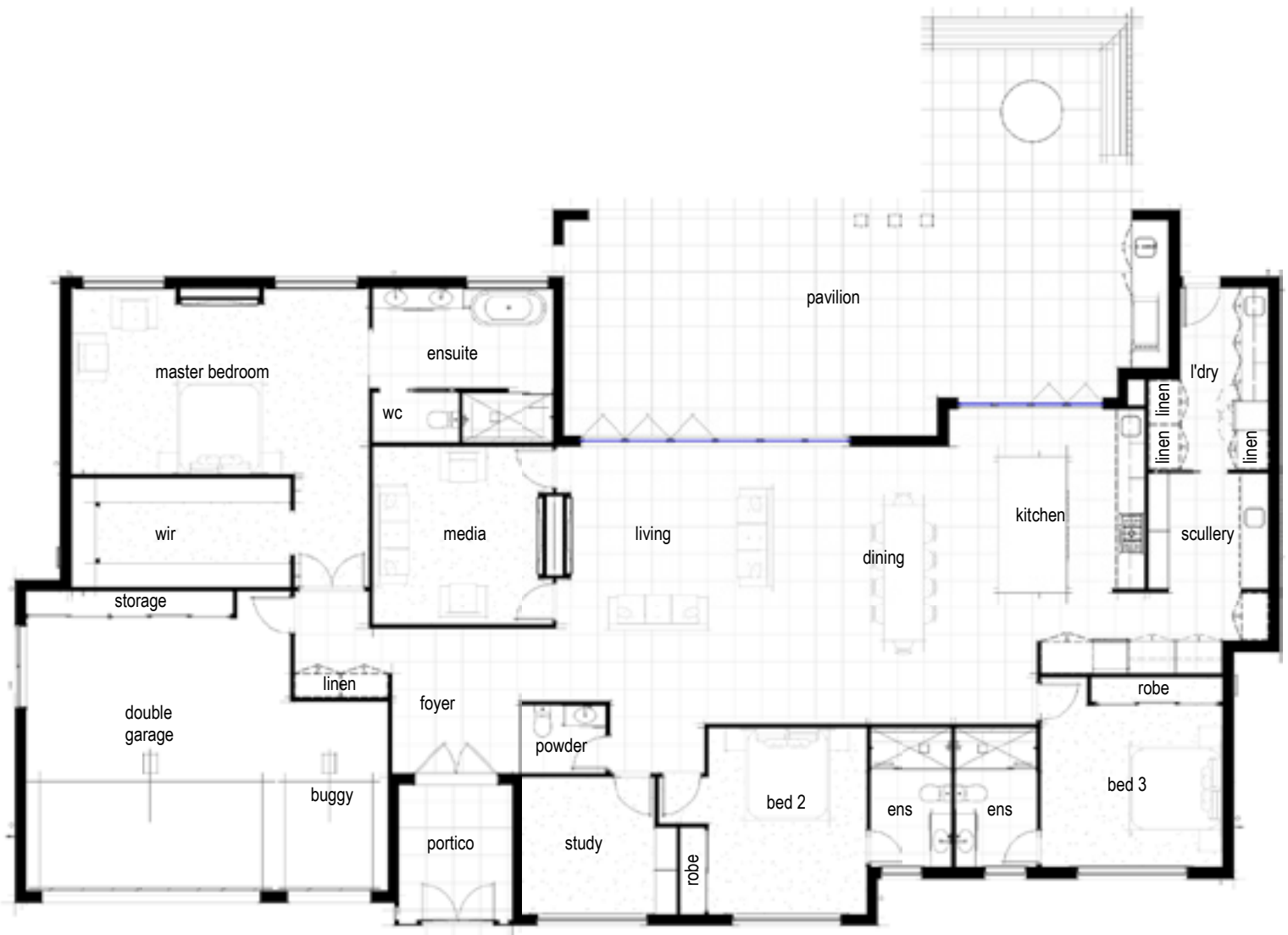
SANCTUARY COVE<sup>®</sup>

*One day is never enough*

SANCTUARYCOVE.COM | 07 5577 6500

GPEREZ-ARCEO@MULPHA.COM.AU | 0457 702 802

# FLOOR PLANS



INTERNAL LIVING XXm<sup>2</sup>

EXTERNAL LIVING XXm<sup>2</sup>

**TOTAL 395.62m<sup>2</sup>**

---

**LAND SIZE 784m<sup>2</sup>**

DISCLAIMER: Please note that whilst every care is taken to ensure the contents of this brochure are correct, this information is to be used as a guide only. Purchasers need to rely on their own enquirers and refer to contract of sale. Quay lines are subject to final approval.

# SPECIFICATIONS & INCLUSIONS

## EXTERIOR DETAILING

- Rendered masonry walls
- Lightweight cladding
- Undercover outdoor pavilion and porch
- Aluminium windows with insect screens to operable windows
- Feature driveways
- Quality landscaping to front & rear yards
- Instantaneous hot water system
- Clothes line
- Tilt-up masonry fence to side & rear boundaries
- TV antenna
- Remote controlled garage doors
- Fire pit & seating to rear yard

## BATHROOM / ENSUITE

- Full height wall tiling
- Semi-frameless shower screens
- Quality chrome tapware
- Generous vanities & storage

## INTERIORS

- Generous ceiling heights (minimum 2.7m to living rooms)
- Large format floor tiles to living rooms
- Stone slabs to all kitchen & bathroom benchtops
- Quality carpet to all bedrooms
- Reverse cycle ducted air conditioning
- Insulation to ceiling and walls
- LED downlights to living rooms
- Ceiling fans to all bedrooms
- Built in wardrobes to all bedrooms
- Ample storage

## KITCHEN

- Tiled splashback
- 90cm oven
- 90cm gas cooktop
- 60cm fully integrated dishwasher
- Externally ducted rangehood
- Undermount sink
- Outdoor built in BBQ





# SANCTUARY POINT

SANCTUARY  COVE.

If you've ever imagined what life would be like living in a resort, then wonder no more. Here, a sense of calm seems to ripple throughout the community and everything seems to move at a gentler pace. The faces seem friendlier, events less formal and the leisure time activities more interesting.

No wonder you're going to want to call it home.

DISPLAY   
HOME

SANCTUARY  COVE. *One day is never enough*

[SANCTUARYCOVE.COM](http://SANCTUARYCOVE.COM) 07 5577 6500 [GPerez-Arceo@Mulpha.com.au](mailto:GPerez-Arceo@Mulpha.com.au)

SANCTUARY COVE SALES CENTRE // Jabiru House, Masthead Way, Sanctuary Cove  
Open Monday to Friday 8.30am - 5pm and Saturday & Sunday 10am - 4pm // Take exit 57 off the M1

▲ A MULPHA COMPANY