

LOT 43 THE POINT CIRCUIT

Homecorp®
CONSTRUCTIONS



ARTISTS IMPRESSION



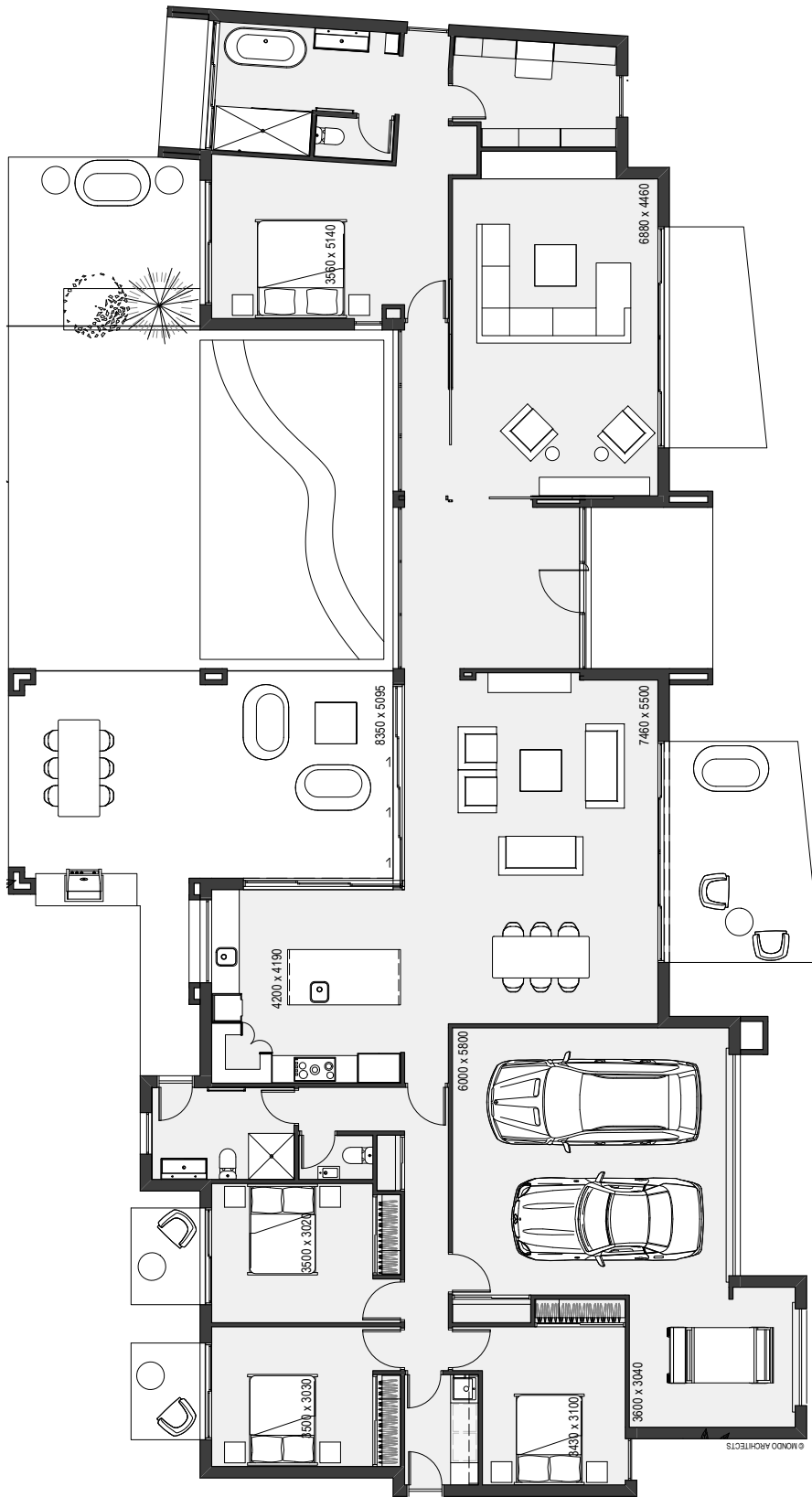
SANCTUARY COVE®

One day is never enough

SANCTUARYCOVE.COM | 07 5577 6500

GPEREZ-ARCEO@MULPHA.COM.AU | 0457 702 802

FLOOR PLANS



			
4	2	2	2.5

INTERNAL LIVING
288m²

EXTERNAL LIVING
81m²

TOTAL 369m²

LAND SIZE 782m²

DISCLAIMER: Please note that whilst every care is taken to ensure the contents of this brochure are correct, this information is to be used as a guide only. Purchasers need to rely on their own enquirers and refer to contract of sale. Quay lines are subject to final approval.

SPECIFICATIONS & INCLUSIONS

EXTERIOR DETAILING

- Rendered masonry walls
- Lightweight cladding
- Undercover outdoor patio and porch
- Aluminium windows with insect screens to operable windows
- Feature driveways
- Quality landscaping to front & rear yards
- Instantaneous hot water system
- Clothes line
- Tilt-up masonry fence to side & rear boundaries
- TV antenna
- Remote controlled garage doors
- Swimming pool to rear yard with glass fencing

BATHROOM / ENSUITE

- Full height wall tiling
- Semi-frameless shower screens
- Quality chrome tapware
- Generous vanities & storage

INTERIORS

- Generous ceiling heights (minimum 2.7m to living rooms)
- Large format floor tiles to living rooms
- Stone slabs to all kitchen & bathroom benchtops
- Quality carpet to all bedrooms
- Reverse cycle ducted air conditioning
- Insulation to ceiling and walls
- LED downlights to living rooms
- Ceiling fans to all bedrooms
- Built in wardrobes to all bedrooms
- Ample storage

KITCHEN

- Tiled splashback
- 60cm oven
- Gas cooktop
- 60cm fully integrated dishwasher
- Externally ducted rangehood
- Undermount sink
- Outdoor built in BBQ





SANCTUARY POINT

SANCTUARY  COVE.

If you've ever imagined what life would be like living in a resort, then wonder no more. Here, a sense of calm seems to ripple throughout the community and everything seems to move at a gentler pace. The faces seem friendlier, events less formal and the leisure time activities more interesting.

No wonder you're going to want to call it home.

DISPLAY 
HOME

SANCTUARY  COVE. *One day is never enough*

SANCTUARYCOVE.COM 07 5577 6500 GPerez-Arceo@Mulpha.com.au

SANCTUARY COVE SALES CENTRE // Jabiru House, Masthead Way, Sanctuary Cove
Open Monday to Friday 8.30am - 5pm and Saturday & Sunday 10am - 4pm // Take exit 57 off the M1

▲ A MULPHA COMPANY